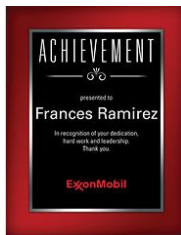


DYR

Design Your Recognition™

2019



Let us *Design Your Recognition*



Design Your Recognition

Let us **Design Your Recognition...**

...and many other products

- ✓ Awards & Plaques
- ✓ Signs & Insignia
- ✓ Wall Art
- ✓ Commemorative Gifts
- ✓ Product Launch Campaigns
- ✓ Lobby Installations
- ✓ Desk and Counter Displays
- ✓ Milestone Messages
- ✓ Mission Statements





2018 Collection

What's Inside



The Drinkwell

- | | |
|----|--------------------------|
| 2 | The Drinkwell |
| 6 | The Box |
| 8 | Gallery Plaques |
| 12 | Full Color Value Plaques |
| 14 | Engraved Value Plaques |

- | | |
|----|-----------------------------|
| 16 | Sublimated Value Plaques |
| 18 | Signature Stand-Off Plaques |
| 20 | Diamond Acrylics |
| 22 | Splash of Color |
| 24 | Themed Plaques |
| 26 | The Tuxedo Collection |



The Box



Signature Stand-Off

- | | |
|----|-----------------|
| 28 | Precious Metals |
| 30 | The Quick Frame |
| 32 | Custom Framing |
| 34 | Mirrors |
| 36 | Greeting Cards |





Bruce Fox®

DYR 
Design Your Recognition™

The Drinkwell

Heavyweight wood base in 5/8" thickness, with imprinted background pattern and gloss lamination for a durable surface. The aluminum stand-off hardware floats a clear acrylic face that is full-color imprinted and includes a 3-1/8" diameter holder.

Pictured RTIC 20 oz. stainless steel tumbler *Hirsch Gift Item #RTIC-20SS* is not included. For more information about RTIC brand tumblers visit:



HIRSCH GIFT



Patent Pending

Background 21
Shown

The Drinkwell Pricing

Tumbler not included

Size	Item #	6	12	25	50	100	250	500
4-1/2 x 8	70607	\$65.20	\$60.00	\$54.80	\$49.60	\$45.20	\$41.40	\$38.20 (7C)

Set-up @ \$50.00 (G)

Set-up with custom base pattern @ \$96.00 (G)

Personalization @ \$3.75 (G)



The Drinkwell

Choose from 28 standard backgrounds



11



12



13



14



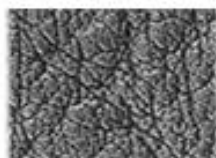
15



16



21



31



32



33



34



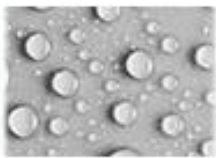
35



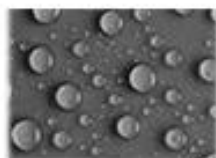
41



42



43



44



51



52



53



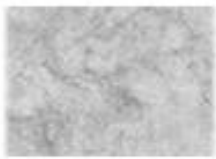
54



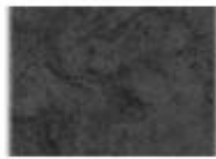
55



61



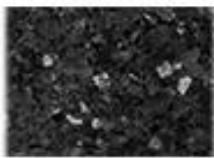
71



72



81



82



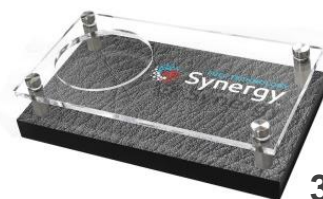
83



84



41



31



16



14



51



21



53





Bruce Fox®

DYR 
Design Your Recognition™

The Drinkwell

Create your own custom background

With your ideas guiding the process, our design team can create virtual renderings of your custom concept, typically within 48 hours.



Patent Pending





Bruce Fox®

DYR 
Design Your Recognition™

The Drinkwell

The Drinkwell *Features*

- ✓ Measures 4-1/2" x 8", a compact addition to your desktop setting
- ✓ The 3-1/8" diameter holder is compatible with most 20 oz. and 30 oz. thermal tumblers, as well as a variety of other beverage containers
- ✓ Provides a stable holder for your beverage, preventing spills that may otherwise damage sensitive or valuable items on your workspace
- ✓ Select one of 28 standard background patterns, or let us create a custom background for you
- ✓ Heavyweight wood base is laminated for a glossy, moisture-resistant finish, and includes a non-skid/non-scratch bottom
- ✓ High-quality, full-color printing directly on clear acrylic stand-off
- ✓ Imprint area is 3-1/2" wide x 3"
- ✓ Optional personalization is available
- ✓ Send us your logo, and provide direction regarding text and copy—we will create a virtual presentation, typically within 48 hours
- ✓ Standard production time is 10-12 business days following proof approval





The Box



34306
6 x 8



34306
8 x 6



34304
4 x 6



34305
5 x 7

The Box Pricing

Size	Item #	<u>3</u>	<u>10</u>	<u>25</u>	<u>50</u>
4 x 6	34304	\$31.50	\$24.75	\$19.75	\$16.50
5 x 7	34305	\$33.00	\$26.25	\$21.25	\$18.00
6 x 8	34306	\$34.75	\$28.00	\$23.00	\$19.75
					(4C)

Set-up @ \$50.00 (G)
Personalization @ \$3.75 (G)





Bruce Fox®

DYR★
Design Your Recognition™

The Box



34305
5 x 7



34304
4 x 6



34306
6 x 8

The Box Features

- ✓ Self-standing deskscape shadowbox in a sleek black finish
- ✓ Send us your logo, and provide direction regarding the text and copy—we will create a virtual presentation, typically within 48 hours
- ✓ At 1-1/2 deep, **THE BOX** will stand on its own, either horizontally or vertically, on any flat surface
- ✓ Perfect for spaces without walls, **THE BOX** doesn't consume much desktop real estate
- ✓ Use **THE BOX** as a recognition award for individual achievement, or as a **countertop sign**
- ✓ Made of wood with a white, satin silver or satin gold metal plate
- ✓ The plate is bumped up from the back of **THE BOX** to give it a dimensional, shadowed effect
- ✓ Standard production time is 8-10 business days following proof approval



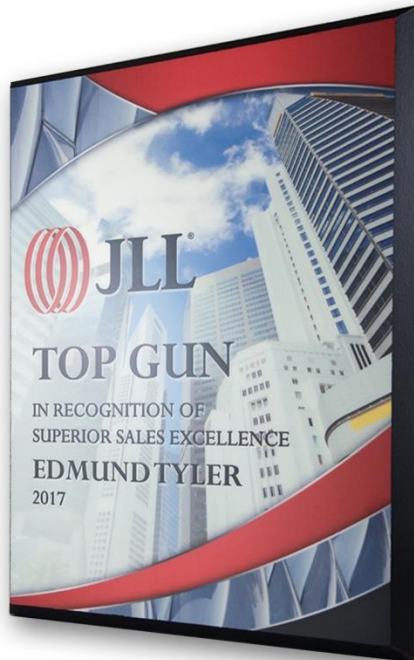
Rush Service Available





Gallery Plaques

Gallery Plaques



8 standard sizes—or custom
size up to **48" x 96"**

Great for recognition awards,
Gallery Plaques are also effective
solutions as signage or wall art





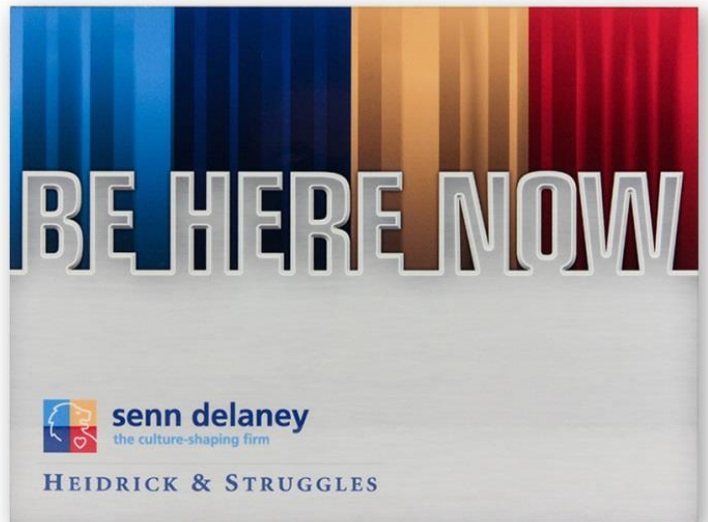
Bruce Fox®

DYR 
Design Your Recognition™



Recognition Award

With integral personalization



Signage

Reinforce brand, mission or cultural message



Wall Art

Décor in lobbies, hallways and public spaces

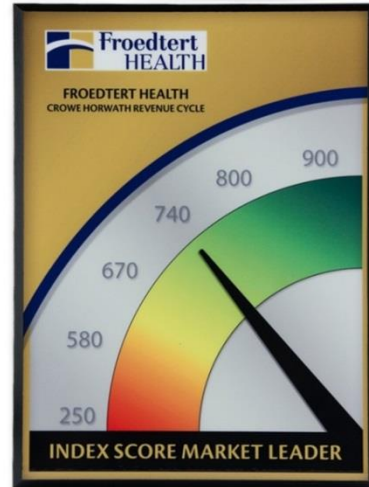




Gallery Plaques Pricing



Infinity Edge



Beveled Edge

<u>Size</u>	<u>Infinity Edge</u> <u>Item #</u>	<u>Beveled Edge</u> <u>Item #</u>	<u>3</u>	<u>10</u>	<u>25</u>	<u>50</u>
7 x 9	22107F	22207B	\$ 47.75	\$ 43.75	\$ 40.25	\$ 39.25
8 x 10	22108F	22208B	\$ 56.75	\$ 52.00	\$ 48.25	\$ 47.25
9 x 12	22109F	22209B	\$ 74.50	\$ 69.75	\$ 65.50	\$ 64.00
10-1/2 x 13	22110F	22210B	\$ 89.75	\$ 84.00	\$ 79.00	\$ 77.25
11 x 14	22111F	22211B	\$ 93.50	\$ 87.50	\$ 82.00	\$ 80.25
12 x 15	22112F	22212B	\$ 99.25	\$ 95.25	\$ 88.75	\$ 86.75
14 x 18	22114F	22214B	\$ 134.50	\$ 125.75	\$ 118.25	\$ 115.50
16 x 20	22116F	22216B	\$ 165.25	\$ 154.00	\$ 145.00	\$ 142.00

(4C)

Set-up @ \$50.00 (G)

Personalization @ \$3.75 (G)

<u>Easel Size</u>	<u>Item #</u>	<u>Each</u>
7 x 9	700131	\$4.00
8 x 10	700132	\$4.25
9 x 12	700133	\$4.50

(G)





Bruce Fox®

DYR★
Design Your Recognition™



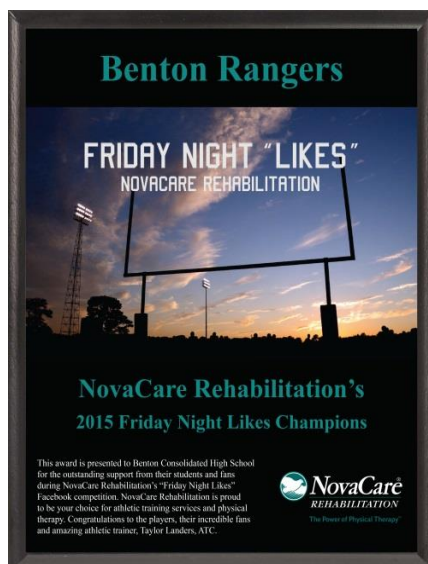
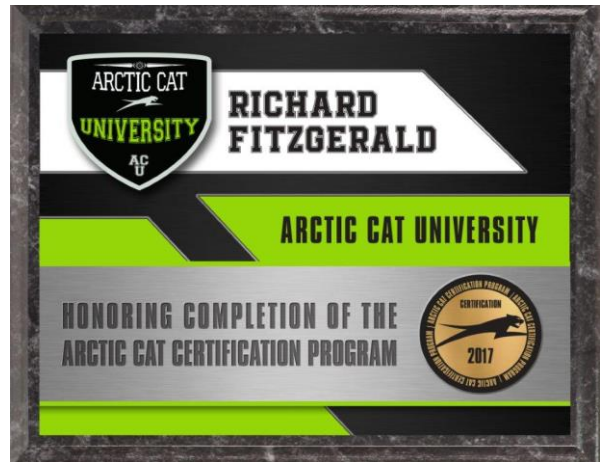
Gallery Plaques *Features*

- ✓ Blank sheet of paper flexibility—we can design a one-of-a-kind plaque
- ✓ Print-on-demand, so inventory commitments are not necessary
- ✓ Send us your logo, and provide direction regarding the text and copy—we will create a virtual presentation, typically within 48 hours
- ✓ High-quality full-color printing directly on panel surface
- ✓ Heavyweight wood panels are 5/8" thick
- ✓ Black bevel trim can be done on either the front (Beveled Edge) or back (Infinity Edge)
- ✓ Face of plaque is laminated for a protective, glossy finish
- ✓ Optional easels for smaller sizes can be added for horizontal or vertical desktop display
- ✓ Standard production time is 8-10 business days following proof approval





Full Color Value Plaques





Bruce Fox®

DYR 
Design Your Recognition™

Full Color Value Plaques *Pricing*

<u>Size</u>	<u>Item #</u>	<u>3</u>	<u>10</u>	<u>25</u>	<u>50</u>
4-1/4 x 6	23204	\$16.25	\$12.75	\$10.25	\$9.75
5 x 7	23205	\$17.25	\$13.75	\$11.25	\$10.25
6 x 8	23206	\$17.75	\$14.75	\$12.25	\$11.75
7 x 9	23207	\$18.25	\$16.75	\$14.25	\$13.75
8 x 10	23208	\$22.00	\$18.75	\$16.75	\$16.25
9 x 12	23209	\$27.75	\$25.25	\$22.50	\$21.50
10-1/2 x 13	23210	\$32.25	\$30.00	\$28.00	\$26.50
12 x 15	23212	\$39.75	\$37.25	\$35.00	\$33.50

(4C)

Set-up @ \$50.00 (G)
Personalization @ \$3.75 (G)



Mix & Match

Choose Cherry, Black,
or Black Marble panel

<u>Easel Size</u>	<u>Item #</u>	<u>Each</u>
5 x 7	700129	\$3.50
6 x 8	700130	\$3.75
7 x 9	700131	\$4.00
8 x 10	700132	\$4.25
9 x 12	700133	\$4.50

(G)

Full Color Value Plaques *Features*

- ✓ Your graphics are printed directly on the panel with high-quality UV inks
- ✓ Send us your logo, and provide direction regarding the text and copy—we will create a virtual presentation, typically within 48 hours
- ✓ Available in 8 sizes and three panel finishes—cherry, solid black, or black marble
- ✓ Optional easels for smaller sizes can be added for horizontal or vertical desktop display
- ✓ Standard production time is 8-10 business days following proof approval

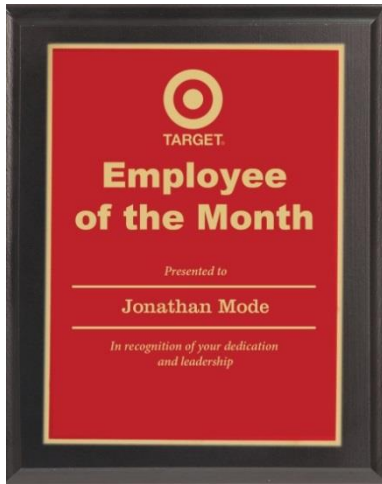


Rush Service Available





Engraved Value Plaques



Black Plaque with Red Brass



Cherry Plaque with Blue Brass



Black Marble Plaque with Black Brass

1 Choose Size

5 x 7
6 x 8
7 x 9
8 x 10
9 x 12
10-1/2 x 13

2 Choose Plaque

Black
Cherry
Black Marble

3 Choose Plate

Black Brass
Blue Brass
Red Brass





Engraved Value Plaques *Pricing*

<u>Size</u>	<u>Item #</u>	<u>3</u>	<u>10</u>	<u>25</u>	<u>50</u>
5 x 7	25305	\$26.75	\$22.75	\$18.25	\$17.25
6 x 8	25306	\$28.00	\$23.75	\$19.50	\$17.75
7 x 9	25307	\$30.75	\$27.25	\$24.50	\$23.00
8 x 10	25308	\$37.00	\$33.75	\$29.00	\$27.50
9 x 12	25309	\$45.75	\$43.75	\$40.75	\$38.75
10-1/2 x 13	25310	\$68.50	\$66.25	\$62.00	\$58.50

(4C)

Set-up @ \$50.00 (G)

Personalization @ \$3.75 (G)



Mix & Match

3 panel finishes and 3 metal plate options = 9 total variations

<u>Easel Size</u>	<u>Item #</u>	<u>Each</u>
7 x 9	700131	\$4.00
8 x 10	700132	\$4.25
9 x 12	700133	\$4.50

(G)

Engraved Value Plaques *Features*

- ✓ Send us your logo, and provide direction regarding the text and copy—we will create a virtual presentation, typically within 48 hours
- ✓ Your graphics are laser engraved on one of three metal plate options—brass/black, brass/blue, and brass/red
- ✓ Available in cherry, solid black, or black marble panels
- ✓ Optional easels for smaller sizes can be added for horizontal or vertical desktop display
- ✓ Standard production time is 8-10 business days following proof approval



Rush Service Available





Bruce Fox®

DYR 
Design Your Recognition™



Sublimated Value Plaques

1

Choose Size

4-1/4 x 6
5 x 7
6 x 8
7 x 9
8 x 10
9 x 12
10-1/2 x 13
12 x 15

2

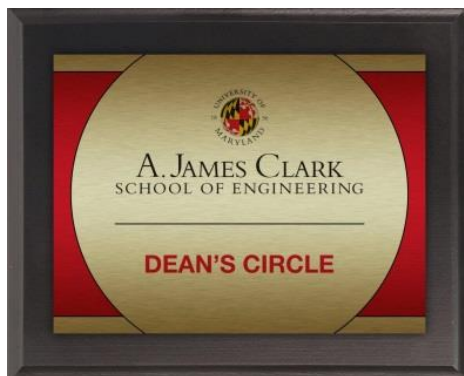
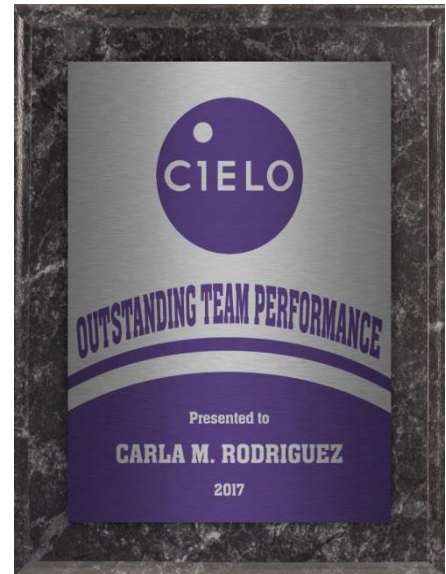
Choose Plaque

Black
Cherry
Black Marble

3

Choose Plate

Gold
Silver
White





Sublimated Value Plaques Pricing



Size	Item #	3	10	25	50
4-1/4 x 6	24204	\$17.25	\$14.50	\$11.75	\$10.75
5 x 7	24205	\$18.75	\$16.00	\$12.75	\$11.75
6 x 8	24206	\$20.25	\$18.00	\$15.75	\$15.25
7 x 9	24207	\$26.00	\$23.75	\$21.00	\$20.00
8 x 10	24208	\$31.75	\$29.25	\$27.00	\$26.00
9 x 12	24209	\$41.50	\$40.00	\$38.00	\$36.00
10-1/2 x 13	24210	\$48.25	\$46.00	\$43.75	\$42.25
12 x 15	24212	\$59.50	\$57.00	\$54.50	\$53.00

(4C)

Set-up @ \$50.00 (G)
Personalization @ \$3.75 (G)



Mix & Match

3 plaque colors and 3 plate colors = 9 total design variations



Sublimated Value Plaques Features

- ✓ Send us your logo, and provide direction regarding the text and copy—we will create a virtual presentation, typically within 48 hours
- ✓ Your graphics are sublimated in full color on one of 3 metal plate options—gold, silver and white finishes
- ✓ Available in 8 sizes and three panel finishes—cherry, solid black, or black marble
- ✓ Optional easels for smaller sizes can be added for horizontal or vertical desktop display
- ✓ Standard production time is 8-10 business days following proof approval





Bruce Fox®

DYR★
Design Your Recognition™

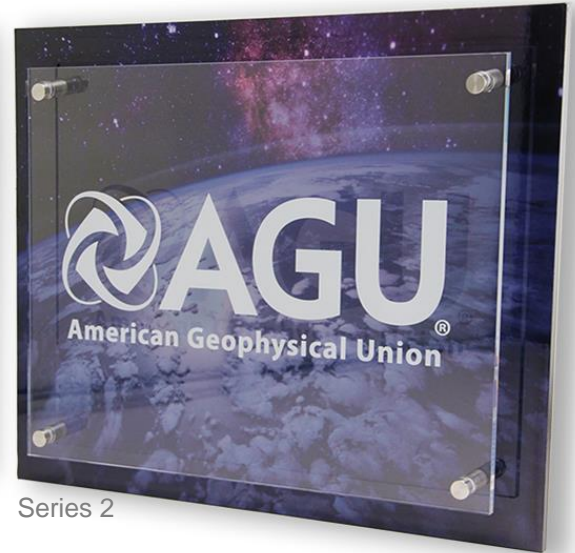
Signature Stand-Offs



Series 3



Series 1



Series 2

Choose from 3 material combinations and 4 sizes



Series 3



Series 2



Series 2



Series 1





Signature Stand-Offs Pricing

Series 1	<u>Size</u>	<u>Item #</u>	<u>3</u>	<u>10</u>	<u>25</u>	<u>50</u>
Acrylic over silver AlumaCore metal backer	9 x 11	26109	\$168.00	\$134.75	\$122.50	\$113.50
	11 x 13	26111	\$197.00	\$164.00	\$156.75	\$145.00
	13 x 16	26113	\$247.00	\$202.50	\$189.25	\$176.50
	20 x 24	26116	\$370.75	\$311.75	\$289.50	\$268.75
Series 2	<u>Size</u>	<u>Item #</u>	<u>3</u>	<u>10</u>	<u>25</u>	<u>50</u>
Acrylic over custom-printed wood backer	9 x 11	26209	\$183.25	\$140.50	\$121.75	\$105.25
	11 x 13	26211	\$210.75	\$159.75	\$139.00	\$120.25
	13 x 16	26213	\$258.50	\$207.00	\$191.25	\$176.50
	20 x 24	26216	\$364.00	\$298.25	\$274.25	\$257.50
Series 3	<u>Size</u>	<u>Item #</u>	<u>3</u>	<u>10</u>	<u>25</u>	<u>50</u>
Aluminum over walnut, cherry, or black wood backer	9 x 11	26309	\$161.00	\$123.50	\$106.75	\$92.25
	11 x 13	26311	\$185.25	\$140.50	\$122.00	\$105.50
	13 x 16	26313	\$227.00	\$181.50	\$167.50	\$154.75
	20 x 24	26316	\$319.75	\$262.00	\$240.75	\$226.00 (4C)

Set-up @ \$50.00 (G)

Personalization @ \$3.75 (G)

Signature Stand-Offs Features

- ✓ A popular choice for interior signage and identification
- ✓ Five combinations of acrylic and aluminum stand-offs and metal and wood background panels
- ✓ Send us your logo, and provide direction regarding the text and copy – we will create a virtual presentation, typically within 48 hours
- ✓ Full-color digital imprinting with high quality UV inks
- ✓ Premium grade stand-off hardware in satin aluminum
- ✓ Standard production time is 10-12 business days following proof approval





Bruce Fox®

DYR 
Design Your Recognition™

Diamond Acrylics





Diamond Acrylics

Diamond Acrylics Pricing

Vertical	Size	Item #	<u>3</u>	<u>10</u>	<u>25</u>	<u>50</u>
	7 x 9	700182	\$87.00	\$79.00	\$75.50	\$72.00
	9 x 11	700181	\$103.50	\$95.25	\$90.25	\$85.75

Horizontal	Size	Item #	<u>3</u>	<u>10</u>	<u>25</u>	<u>50</u>
	7 x 9	700183	\$87.00	\$79.00	\$75.50	\$72.00
	9 x 11	700180	\$103.50	\$95.25	\$90.25	\$85.75

(4C)

Set-up @ \$50.00 (G)

Personalization @ \$3.75 (G)

Diamond Acrylics Features

- ✓ Use **Diamond Acrylics** as recognition awards for individual achievement, or as countertop signs
- ✓ Send us your logo, and provide direction regarding the text and copy—we will create a virtual presentation, typically within 48 hours
- ✓ Sleek, contemporary design
- ✓ Horizontal and vertical options in two sizes
- ✓ High-quality full color imprint on back of clear acrylic upright, affixed to a black acrylic base
- ✓ Standard production time is 10-12 business days following proof approval
- ✓ Base is 5/8" black acrylic with beveled top edges
- ✓ Upright is 1/2" clear acrylic with a beveled front edge





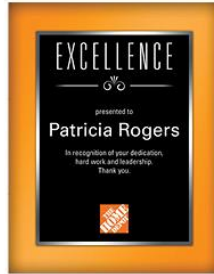
Bruce Fox®

DYR★
Design Your Recognition™

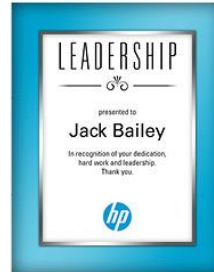
Splash of Color



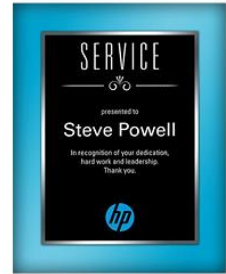
White on Orange



Black on Orange



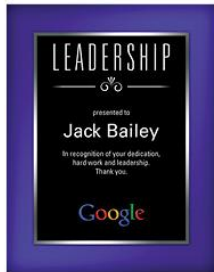
White on Light Blue



Black on Light Blue



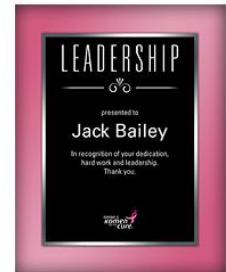
White on Plum



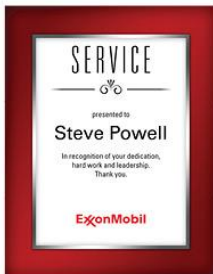
Black on Plum



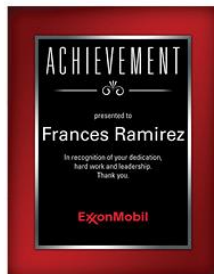
White on Pink



Black on Pink



White on Red



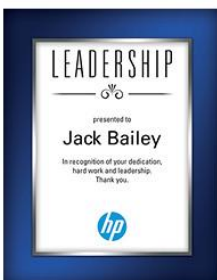
Black on Red



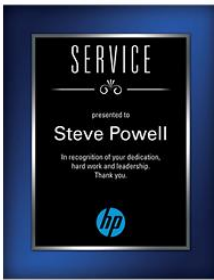
White on Green



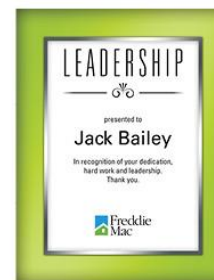
Black on Green



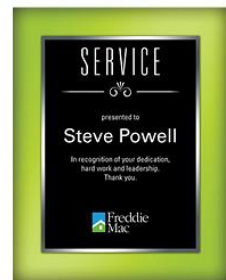
White on Royal Blue



Black on Royal Blue



White on Lime



Black on Lime





Bruce Fox®

DYR★
Design Your Recognition™

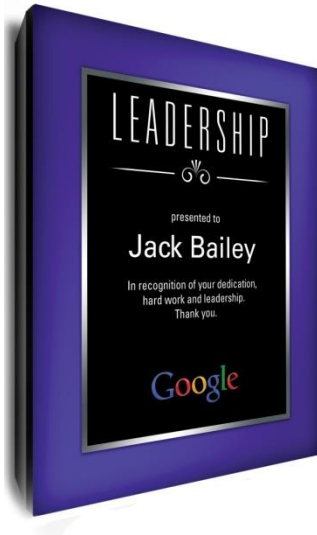


Mix & Match

8 border colors and 2
face colors provide 16
total design variations

Splash of Color

Splash of Color Pricing



<u>Size</u>	<u>Item #</u>	<u>3</u>	<u>10</u>	<u>25</u>	<u>50</u>
7 x 9	22307	\$36.25	\$31.50	\$26.00	\$24.50
8 x 10	22308	\$42.25	\$36.25	\$30.50	\$28.50
9 x 12	22309	\$49.75	\$43.75	\$36.50	\$34.00
12 x 15	22312	\$59.75	\$52.25	\$44.25	\$41.75

(4C)

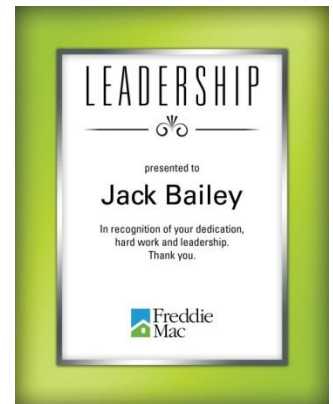
<u>Easel Size</u>	<u>Item #</u>	<u>Each</u>
5 x 7	700129	\$3.50
6 x 8	700130	\$3.75
7 x 9	700131	\$4.00
8 x 10	700132	\$4.25
9 x 12	700133	\$4.50

(G)

Set-up @ \$50.00 (G)
Personalization @ \$3.75 (G)

Splash of Color Features

- ✓ Send us your logo, and provide direction regarding the text and copy—we will create a virtual presentation, typically within 48 hours
- ✓ High-quality full-color printing directly on panel surface
- ✓ Choose a title—or create your own
- ✓ Heavyweight wood panels are 5/8" thick
- ✓ Black bevel trim on the back (Infinity edge) gives **SPLASH OF COLOR** a sleek finish
- ✓ Face of plaque is laminated for a protective, glossy finish
- ✓ Optional easels for smaller sizes can be added for horizontal or vertical desktop display
- ✓ Standard production time is 8-10 business days following proof approval





Bruce Fox®

DYR 
Design Your Recognition™

Themed Plaques

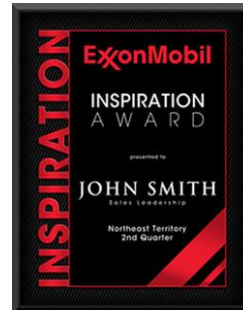
Themed Plaques



Ocean Blue



Purple



Red



Orange



Lime Green

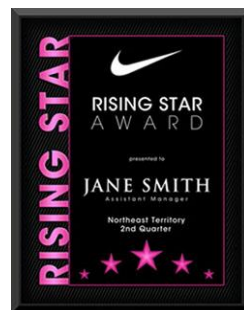


Green



Gold

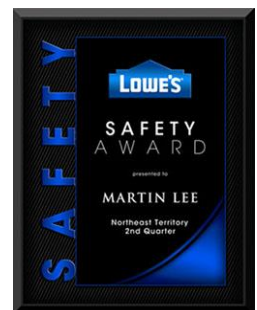
Choose from
10 colors and
10 graphic
treatments



Pink



Silver



Royal Blue





Themed Plaques *Pricing*

<u>Size</u>	<u>Item #</u>	<u>3</u>	<u>10</u>	<u>25</u>	<u>50</u>
7 x 9	22707	\$36.25	\$31.50	\$26.00	\$24.50
8 x 10	22708	\$42.25	\$36.25	\$30.50	\$28.50
9 x 12	22709	\$49.75	\$43.75	\$36.50	\$34.00
12 x 15	22712	\$59.75	\$52.25	\$44.25	\$41.75

(4C)

Set-up @ \$50.00 (G)
Personalization @ \$3.75 (G)



Mix & Match

10 colors and 10 standard graphic selections = 100 total design variations

<u>Easel Size</u>	<u>Item #</u>	<u>Each</u>
7 x 9	700131	\$4.00
8 x 10	700132	\$4.25
9 x 12	700133	\$4.50

(G)

Themed Plaques *Features*

- ✓ Send us your logo, and provide direction regarding the text and copy—we will create a virtual presentation, typically within 48 hours
- ✓ Choose a title—or create your own
- ✓ High-quality full-color printing directly on panel surface
- ✓ Heavyweight wood panels are 5/8" thick
- ✓ Face of plaque is laminated for a protective, glossy finish
- ✓ Optional easels for smaller sizes can be added for horizontal or vertical desktop display
- ✓ Standard production time is 8-10 business days following proof approval





Bruce Fox®

DYR★
Design Your Recognition™

The Tuxedo Collection

1

Choose Size

7 x 9
8 x 10
9 x 12
12 x 15

2

Choose Color

Black
White

3

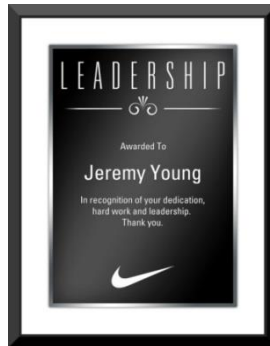
Choose Border

Black
White

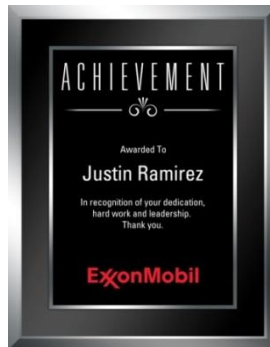
4

Choose Trim Color

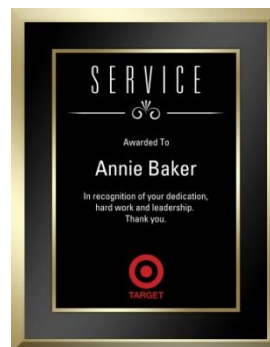
Black
Gold
Silver



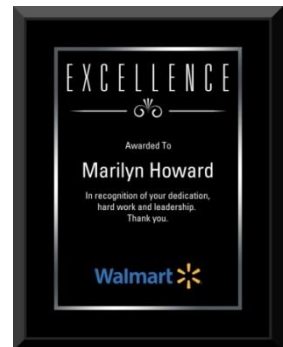
Black on White with Black Trim



Black on Black with Silver Trim



Black on Black with Gold Trim



Black on Black with Black Trim



White on Black with Black Trim





The Tuxedo Collection *Pricing*

<u>Size</u>	<u>Item #</u>	<u>3</u>	<u>10</u>	<u>25</u>	<u>50</u>
7 x 9	22807	\$36.25	\$31.50	\$26.00	\$24.50
8 x 10	22808	\$42.25	\$36.25	\$30.50	\$28.50
9 x 12	22809	\$49.75	\$43.75	\$36.50	\$34.00
12 x 15	22812	\$59.75	\$52.25	\$44.25	\$41.75

(4C)

Set-up @ \$50.00 (G)

Personalization @ \$3.75 (G)



Mix & Match

2 border colors and 2 face colors
and 3 beveled trim colors = 12 total
design variations

<u>Easel Size</u>	<u>Item #</u>	<u>Each</u>
7 x 9	700131	\$4.00
8 x 10	700132	\$4.25
9 x 12	700133	\$4.50

(G)

The Tuxedo Collection *Features*

- ✓ High-quality full-color printing directly on panel surface
- ✓ Send us your logo, and provide direction regarding the text and copy—we will create a virtual presentation, typically within 48 hours
- ✓ Choose a title—or create your own
- ✓ Heavyweight wood panels are 5/8" thick
- ✓ Face of plaque is laminated for a protective, glossy finish
- ✓ Optional easels for smaller sizes can be added for horizontal or vertical desktop display
- ✓ Standard production time is 8-10 business days following proof approval





Bruce Fox

DYR 
Design Your Recognition™

Precious Metals

1

Choose Size

7 x 9
8 x 10
9 x 12
12 x 15

2

Choose Color

Modern Silver
Abstract Gold
Abstract Silver
Industrial Gold
Industrial Silver
Modern Gold

3

Choose Border

Rosewood Border
Black Border
Blue Marble Border
Green Marble Border
Red Marble Border
Walnut Border

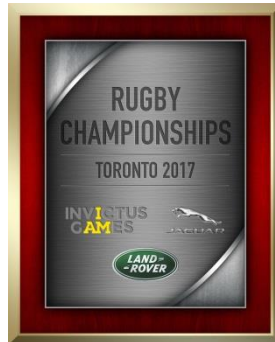
4

Choose Trim Color

Black
Gold
Silver

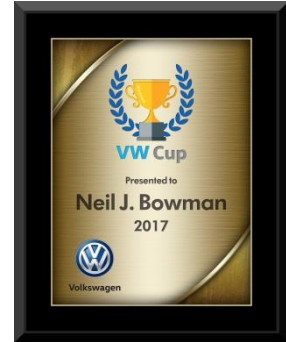


Rosewood Border



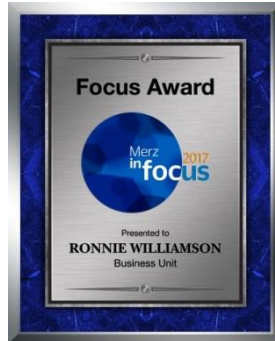
Modern Silver with Gold Trim

Black Border



Abstract Gold with Black Trim

Blue Marble Border



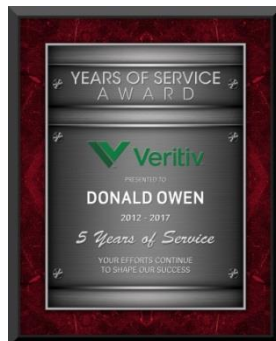
Abstract Silver with Silver Trim

Green Marble Border



Industrial Gold with Gold Trim

Red Marble Border



Industrial Silver with Silver Trim

Walnut Border



Modern Gold with Gold Trim





Precious Metals Pricing

<u>Size</u>	<u>Item #</u>	<u>3</u>	<u>10</u>	<u>25</u>	<u>50</u>
7 x 9	22407	\$36.25	\$31.50	\$26.00	\$24.50
8 x 10	22408	\$42.25	\$36.25	\$30.50	\$28.50
9 x 12	22409	\$49.75	\$43.75	\$36.50	\$34.00
12 x 15	22412	\$59.75	\$52.25	\$44.25	\$41.75

(4C)

Set-up @ \$50.00 (G)

Personalization @ \$3.75 (G)



Mix & Match

6 border colors and 6 face colors
and 3 beveled trim colors = 108 total
design variations

<u>Easel Size</u>	<u>Item #</u>	<u>Each</u>
7 x 9	700131	\$4.00
8 x 10	700132	\$4.25
9 x 12	700133	\$4.50

(G)

Precious Metals Features

- ✓ Send us your logo, and provide direction regarding the text and copy—we will create a virtual presentation, typically within 48 hours
- ✓ Create your own title for total flexibility
- ✓ High-quality full-color printing directly on panel surface
- ✓ Heavyweight wood panels are 5/8" thick
- ✓ Face of plaque is laminated for a protective, glossy finish
- ✓ Optional easels for smaller sizes can be added for horizontal or vertical desktop display
- ✓ Standard production time is 8-10 business days following proof approval





Bruce Fox®

DYR★
Design Your Recognition™

The Quick Frame

The Quick Frame



**Available in 9 x 13 and
19 x 24 sizes with white
mat in black or walnut
wood frames**





The Quick Frame *Pricing*

	<u>Size</u>	<u>Item #</u>	<u>3</u>	<u>10</u>	<u>25</u>	<u>50</u>
1" Black Frame with White Mat	9 x 13	42405	\$48.25	\$41.75	\$39.75	\$38.75
1" Walnut Frame with White Mat	9 x 13	42505	\$48.25	\$41.75	\$39.75	\$38.75
2-3/4" Black Frame with White Mat	19 x 24	42605	\$109.75	\$105.50	\$100.50	\$99.50
2-3/4" Walnut Frame with White Mat	19 x 24	42705	\$109.75	\$105.50	\$100.50	\$99.50

(4C)

Set-up @ \$50.00 (G)

Personalization @ \$3.75 (G)

The Quick Frame *Features*

- ✓ Standard sizes in two frame colors, and a single-opening bleached white mat make this a quick and easy alternative to custom framing
- ✓ **THE QUICK FRAME** features a fully-customizable print under tempered glass
- ✓ Send us your logo, and provide direction regarding the text and copy—we will create a virtual presentation, typically within 48 hours
- ✓ Ideal for use as recognition awards, or as **wall décor** and **commemorative gifts**
- ✓ Standard production time is 12-15 business days following proof approval







Custom Framing *Pricing*

	<u>Size</u>	<u>Item #</u>	<u>3</u>	<u>10</u>	<u>25</u>	<u>50</u>
Frame + Print	9 x 11	43509	\$37.75	\$34.75	\$33.75	\$32.00
Frame + Print + Single Mat	9 x 11	43609	\$43.00	\$38.75	\$37.50	\$35.25
Print + Double Mat	9 x 11	43709	\$47.50	\$42.50	\$41.00	\$38.50

	<u>Size</u>	<u>Item #</u>	<u>3</u>	<u>10</u>	<u>25</u>	<u>50</u>
Frame + Print	11 x 14	43511	\$77.75	\$72.75	\$68.25	\$65.00
Frame + Print + Single Mat	11 x 14	43611	\$91.75	\$81.25	\$72.00	\$68.25
Print + Double Mat	11 x 14	43711	\$108.25	\$95.75	\$85.00	\$80.00

	<u>Size</u>	<u>Item #</u>	<u>3</u>	<u>10</u>	<u>25</u>	<u>50</u>
Frame + Print	16 x 20	43516	\$125.75	\$118.75	\$111.00	\$106.00
Frame + Print + Single Mat	16 x 20	43616	\$150.00	\$124.00	\$118.25	\$111.50
Print + Double Mat	16 x 20	43716	\$175.75	\$156.50	\$138.75	\$130.75

(4C)

Set-up @ \$50.00 (G)

Personalization @ \$3.75 (G)

Custom Framing *Features*

- ✓ The possibilities are endless with many choices among frame styles, mats, and openings
- ✓ Add an imprinted personalized metal plate to present as an award or commemorative gift
- ✓ Also ideal for use as decorative wall art
- ✓ All **CUSTOM FRAMING** includes tempered glass facing
- ✓ Need a different size, or want to consider other frame styles? Give your customer care specialist a call to consult in your custom design vision
- ✓ Send us your logo, and provide direction regarding the text and copy—we will create a virtual presentation, typically within 48 hours
- ✓ Standard production time is 15-20 business days following proof approval for sizes and frame styles shown; total custom jobs will require extended lead times, and will be cited at time of proofing





Bruce Fox®

DYR★
Design Your Recognition™

Mirrors

Mirrors





Mirrors Pricing

<u>Overall Size</u>	<u>Mahogany Item #</u>	<u>Cherry Item #</u>	<u>Walnut Item #</u>	<u>Black Item #</u>	<u>25</u>	<u>50</u>	<u>100</u>
11 x 15	52311	52411	52511	52611	\$92.00	\$87.00	\$80.00
15 x 21	52315	52415	52515	52615	\$116.00	\$110.00	\$102.00
19 x 27	52319	52419	52519	52619	\$139.00	\$132.00	\$123.00
22 x 28	52322	52422	52522	52622	\$229.00	\$219.00	\$207.00

(3C)

Set-up @ \$50.00 (G)

Personalization @ \$3.75 (G)

Less-than-minimum @ \$125.00 (G)

Mirrors Features

- ✓ Individual mirrors can be personalized
- ✓ Four frame styles and four sizes provide the flexibility you need
- ✓ Send us your logo, and provide direction regarding the text and copy—we will create a virtual presentation, typically within 48 hours
- ✓ Standard production time is 12-15 business days following proof approval

Mahogany



Cherry



Walnut



Black





Bruce Fox®

DYR 
Design Your Recognition™

Greeting Cards

Greeting Cards



Greeting Cards Pricing

<u>Size</u>	<u>Item #</u>	<u>100</u>	<u>250</u>	<u>500</u>	<u>1000</u>
5 x 7	700134	\$2.50	\$2.25	\$2.00	\$1.75
					(4C)

Set-up @ \$50.00 (G)

Personalization @ \$0.20 (G)

Imprint inside message @ \$0.35 (G)

Imprint envelopes @ QUR

Greeting Card Features


- ✓ Heavy cardstock with gloss finish; blank white envelopes included
- ✓ Digital print-on-demand means quick and flexible production that can be completely customized
- ✓ Use as holiday cards, thank you notes, and announcements of all types
- ✓ Optional variable data imprinting for full personalization capabilities
- ✓ Include a full-color imprinted message as an option
- ✓ Send us your logo, and provide direction regarding the text and copy—we will create a virtual presentation, typically within 48 hours
- ✓ Standard production time is 12-15 business days following proof approval





2018 Collection

General Terms & Conditions

- ✓ **Less-Than-Minimum (LTM)** may be available for an additional fee of \$50.00(G) for most products, unless otherwise noted.
- ✓ **Prices** are subject to change. Please verify prices when ordering.
- ✓ **Production Lead Time** for most products is 8 working days from point of purchase order and proof approval.
- ✓ **Rush Orders** are available for many items; look for the Recognition  Xpress icon for the most compatible rush items.
- ✓ **Rush Charges** for an order completed one business day prior to the standard lead time will incur a rush charge @ 10%; 2 days @ 20%; 3 days @ 30%; 4-5 days @ 50%; 6 days @ \$75%; 7 days @ 100%. Expedited requests require factory authorization in advance.
- ✓ **Virtuals/Proofs** are typically finished in 2-3 days.
- ✓ **Shipping & Handling** is pre-paid FOB Indiana, with itemized charges added to the final invoice. Due to the fluctuating nature of shipping rates, we cannot provide delivery prices in advance of shipment posting.
- ✓ **3rd Party Freight** service is available at an additional cost of \$2.50 net per shipment plus \$0.40 net per product unit. Customers specifying 3rd party freight must provide a credit card for any shipper charge-backs.
- ✓ **Drop Shipments** are available at \$4.50(X) per destination.
- ✓ **Payment Terms** are net 30 days with approved credit. First time customers may require a deposit payment prior to production. Orders less than \$250(X) may require advance payment or credit card.
- ✓ **Foreign Shipment** will require a \$40.00(X) fee in addition to incurred shipping costs. 3rd party freight status is not available for foreign shipments.
- ✓ **UPS** is our preferred parcel carrier. Specifying an alternative carrier may result in delivery delays.

The artwork, designs and trademarks imprinted on products are reproduced to demonstrate our processes, quality and capabilities. They are not intended to represent product endorsed by or produced for the owners of the artwork, designs or trademarks. Bruce Fox, Inc. reserves the right to photograph and display products which it manufactures without liability regarding trademark or design rights unless notified otherwise in writing by the purchaser.

Let us **Design Your Recognition**

